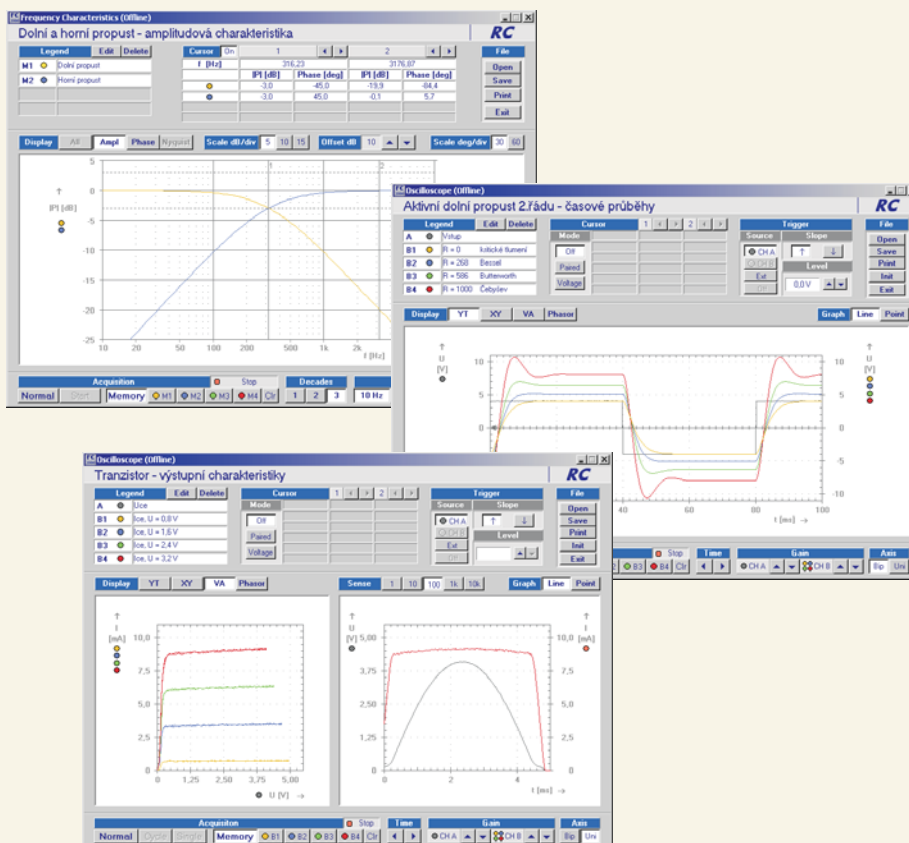


Výukový systém rc2000

Stránky pro inspiraci



Obsah

Obvody střídavého proudu

Integrační a derivační RC článek - časová konstanta	3
Dolní a horní propust - mezní frekvence f_r	4
Dolní a horní propust - frekvenční charakteristika	5
Sériový obvod RLC - pásmová zadrž	6
Sériový obvod RLC - pásmová propust	7
Paralelní obvod RLC - proud v rezonanci	8
Impedanční dělič	9
T- článek frekvenční charakteristika	10

Elektronické součástky

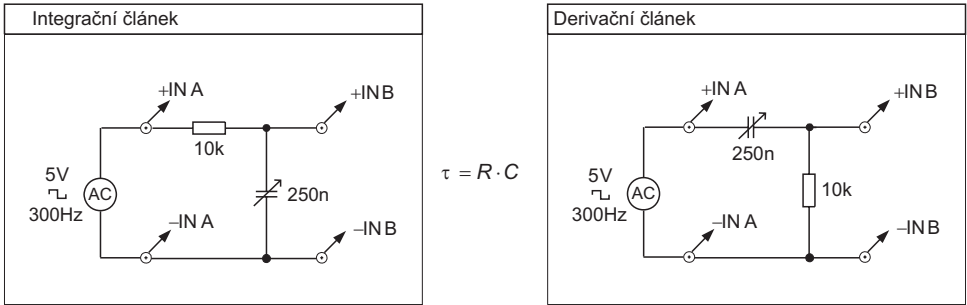
Tranzistor - výstupní a vstupní charakteristika	11
Transil - V/A charakteristika	12
Diodový omezovač	13

Obvody s operačním zesilovačem

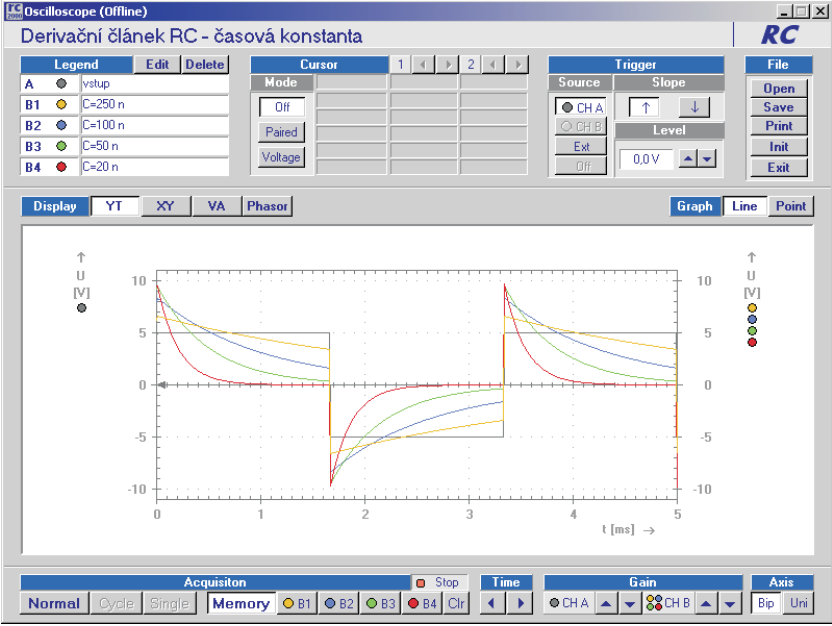
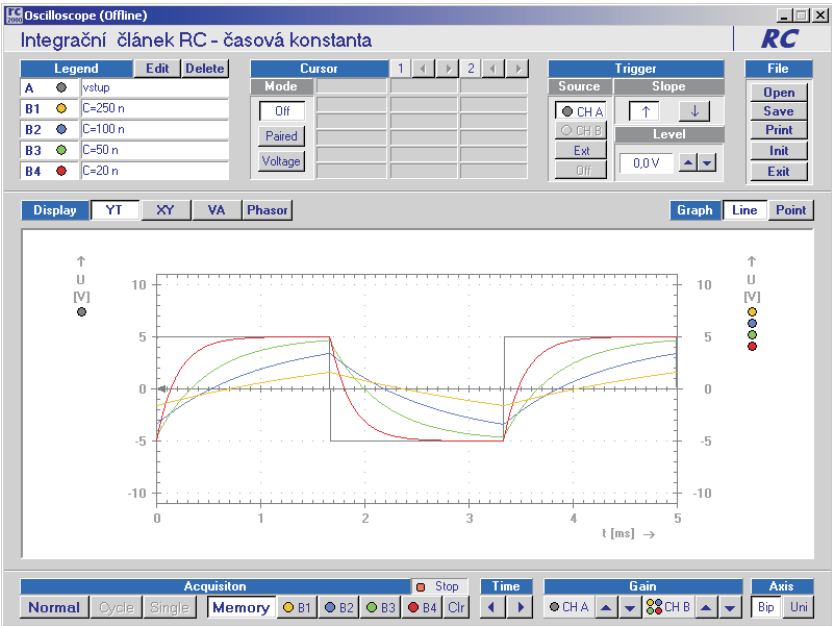
Komparátor s hysterezí	14
Rozdílový zesilovač	15
Astabilní multivibrátor	16
Obvod posunu fáze	17
Aktivní dolní propust 2.řádu	18

Integrační a derivační RC článek - časová konstanta

Schema

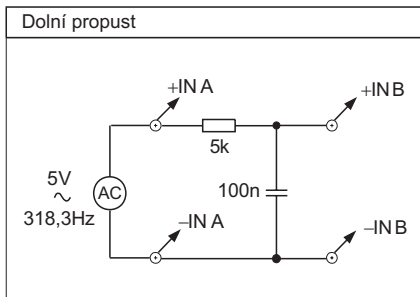


Měření

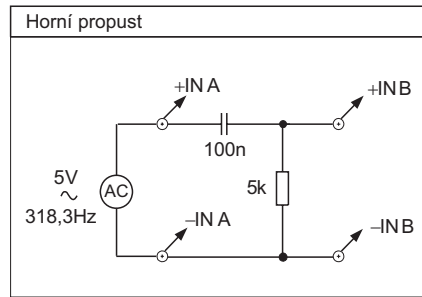


Dolní a horní propust - mezní frekvence f_r

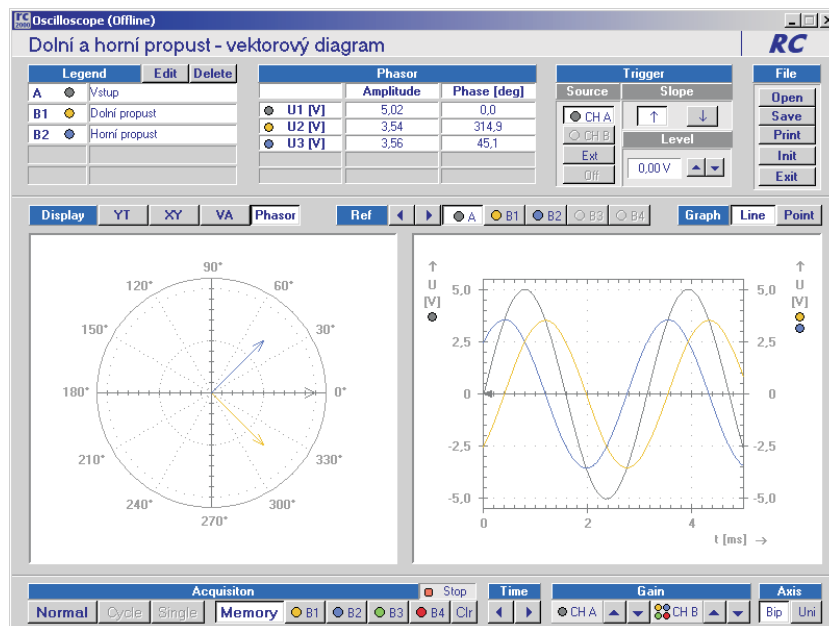
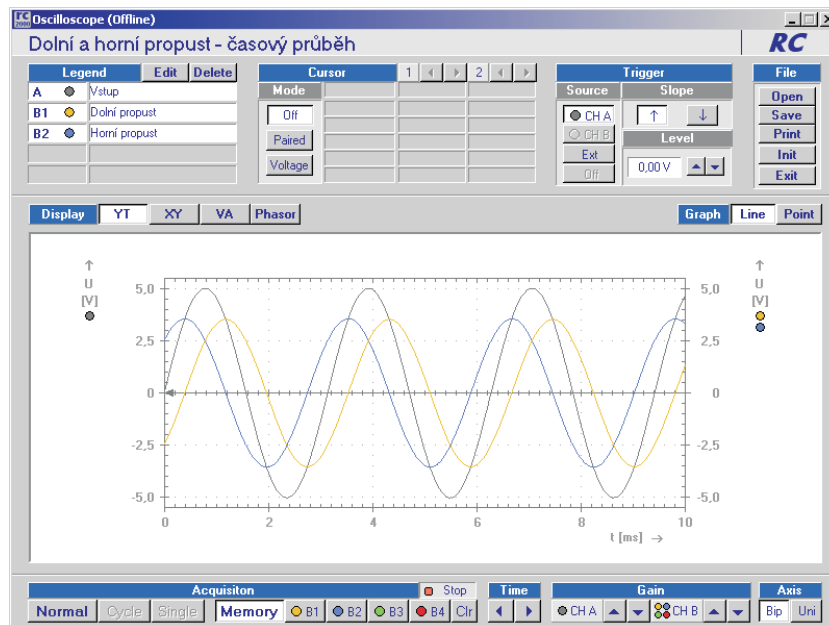
Schema



$$f_r = \frac{1}{2\pi RC}$$

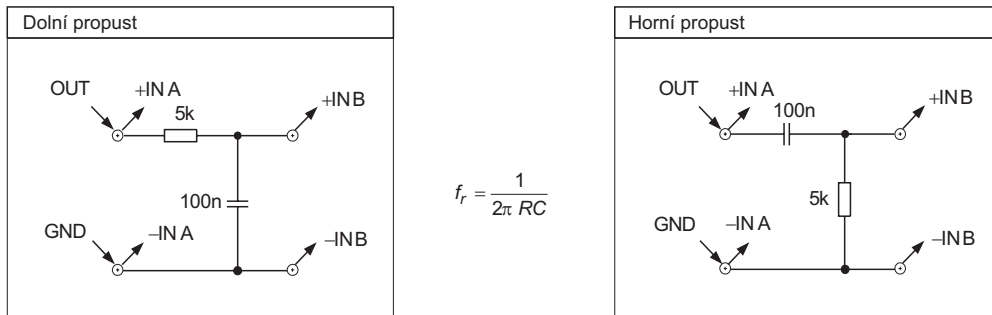


Měření

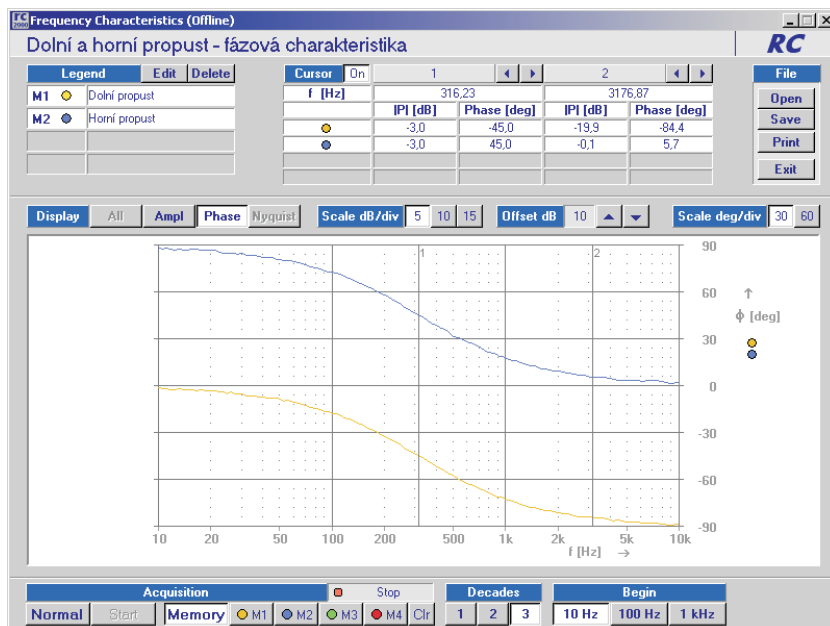
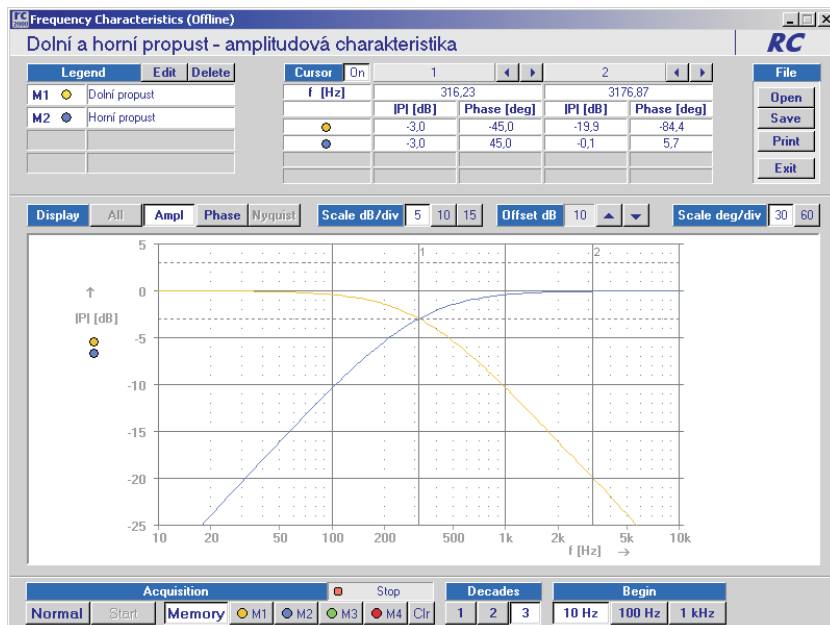


Dolní a horní propust - frekvenční charakteristika

Schema

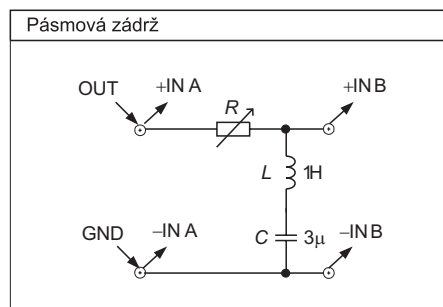


Měření



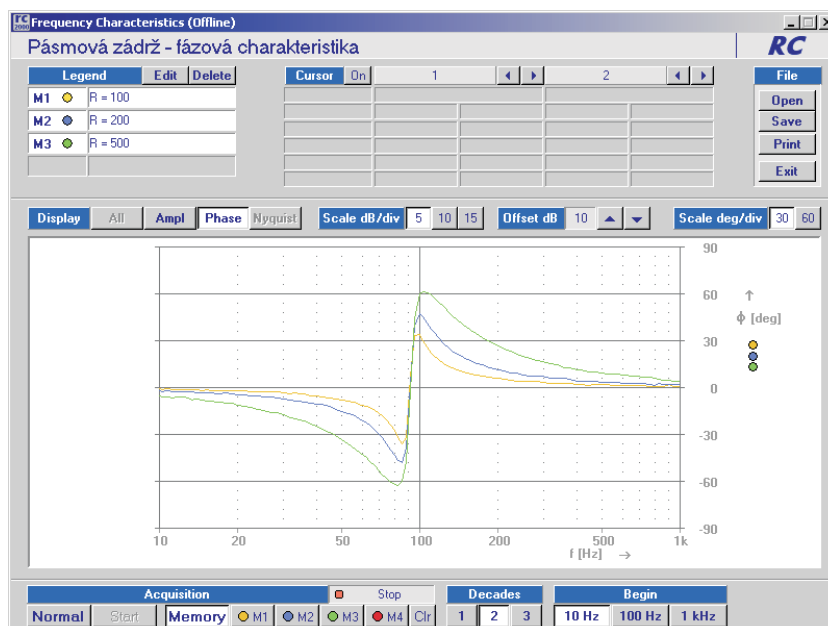
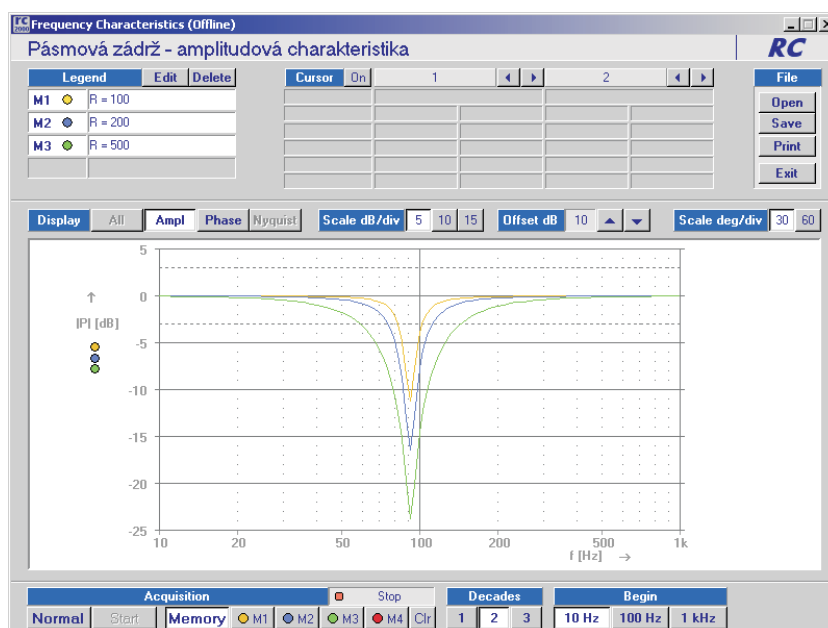
Sériový obvod RLC - pásmová zádrž

Schema



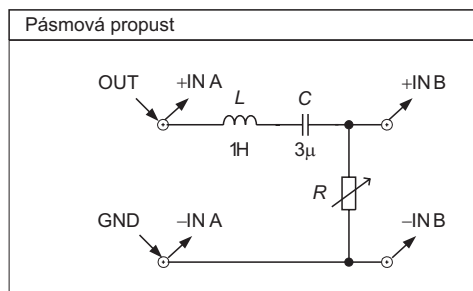
$$f_r = \frac{1}{2\pi\sqrt{LC}}$$

Měření



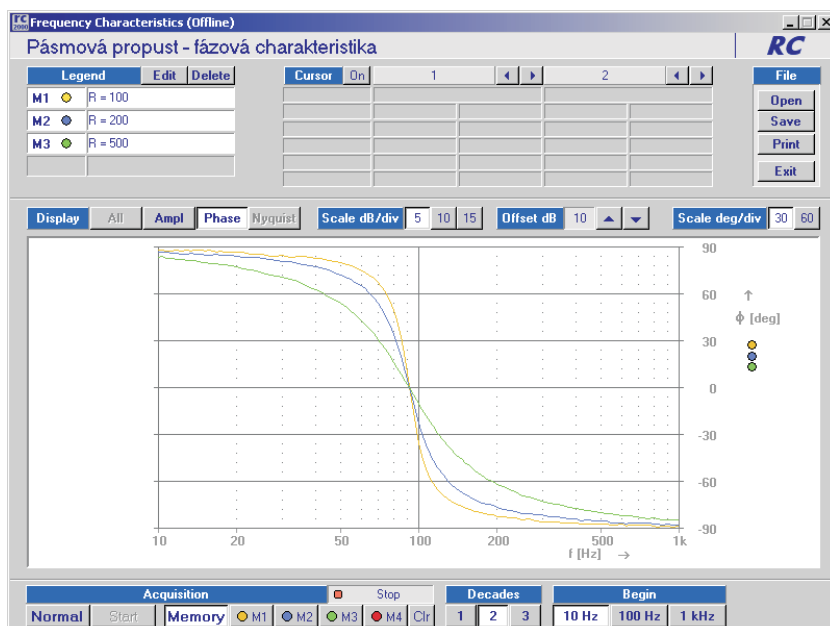
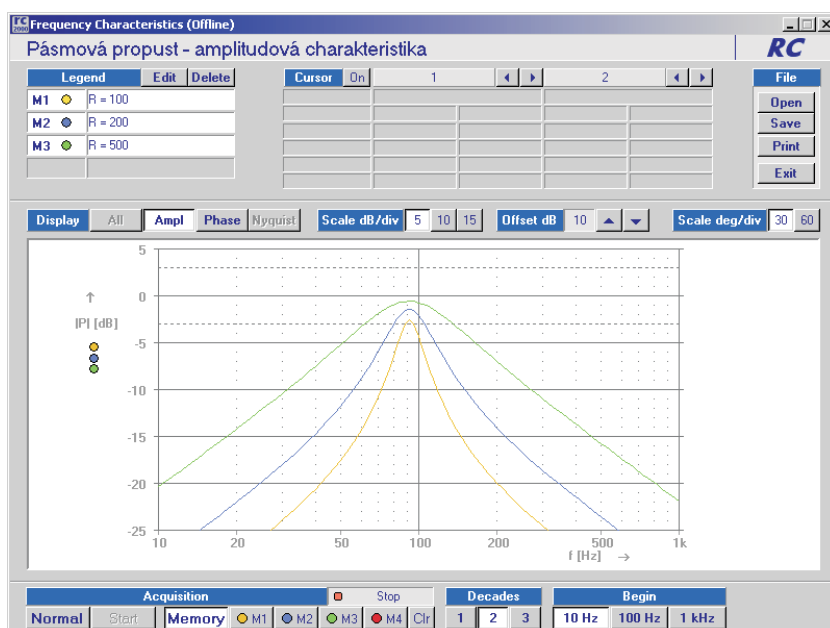
Sériový obvod RLC - pásmová propust

Schema



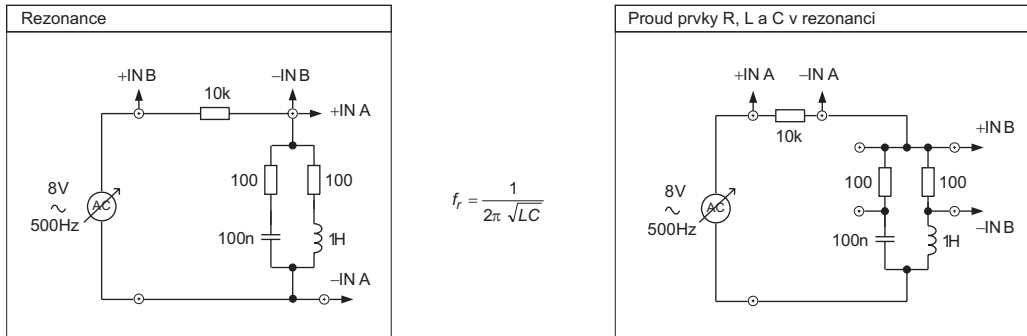
$$f_r = \frac{1}{2\pi\sqrt{LC}}$$

Měření

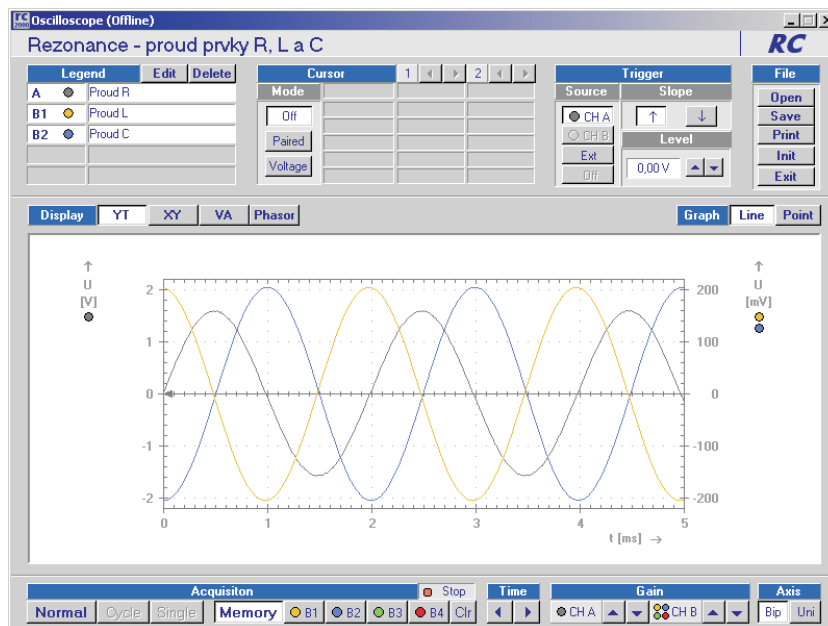
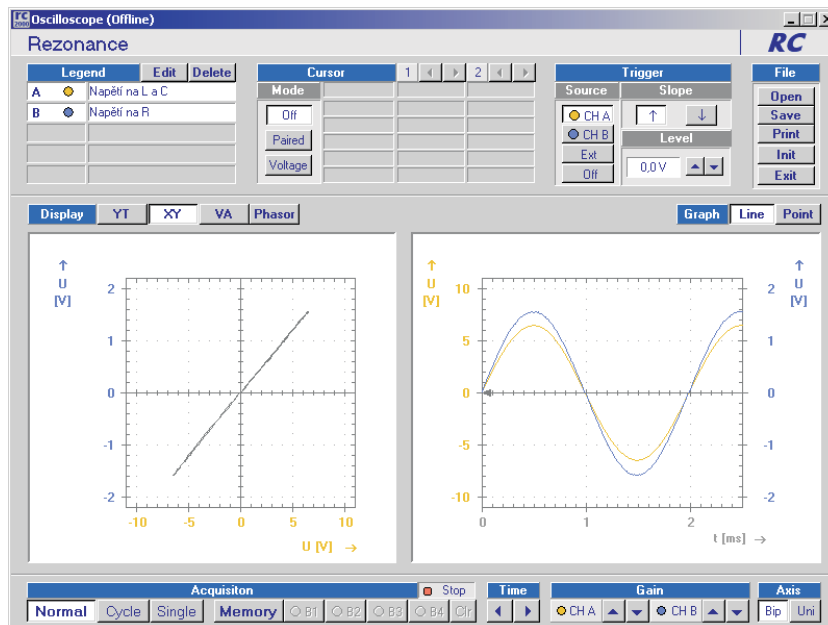


Paralelní obvod RLC - proud v rezonanci

Schema

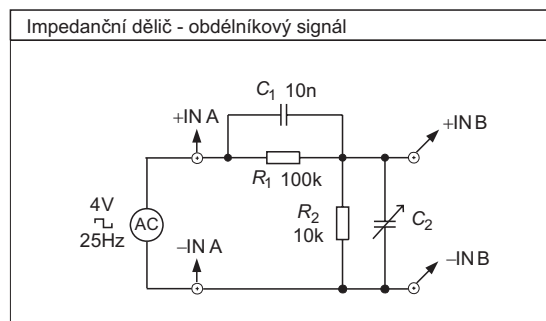


Měření



Impedanční dělič

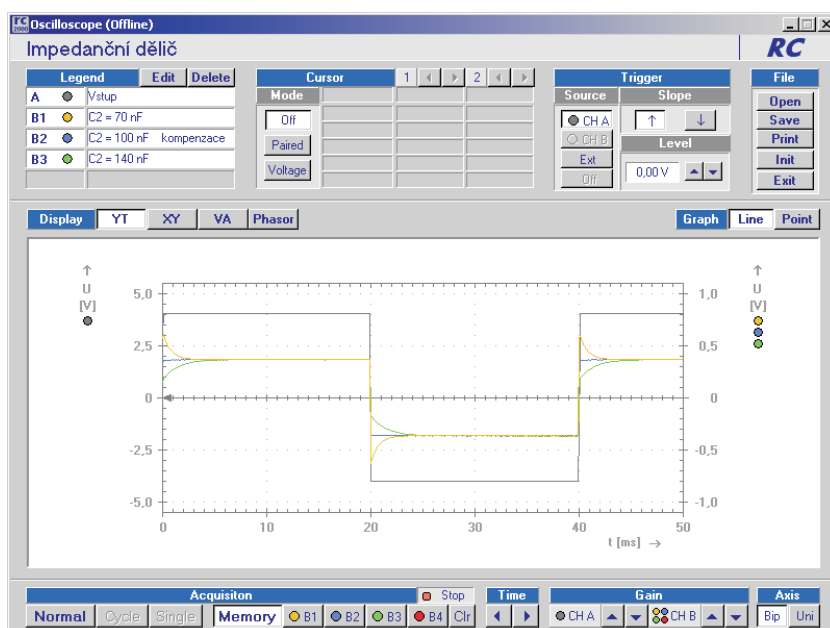
Schema



Kompenzovaný dělič

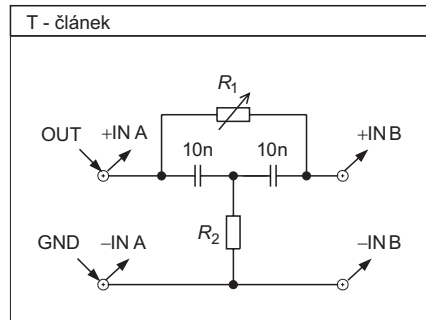
$$R_1 C_1 = R_2 C_2$$

Měření



T-článek frekvenční charakteristika

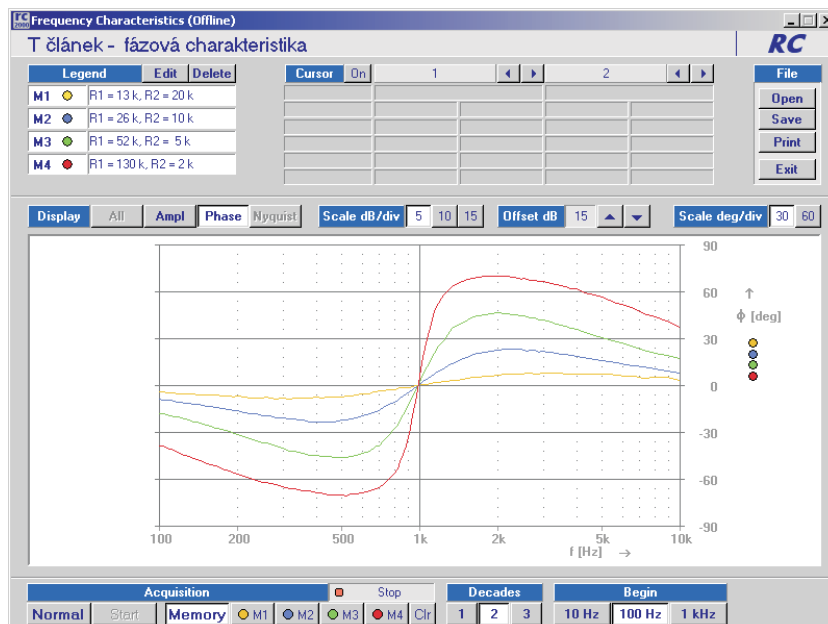
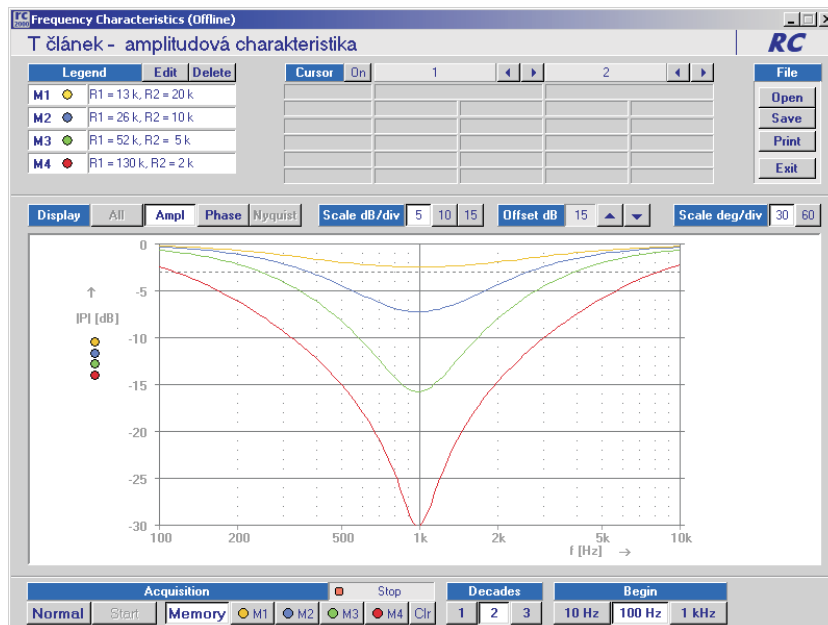
Schema



$$R_1 \cdot R_2 = \text{konst}$$

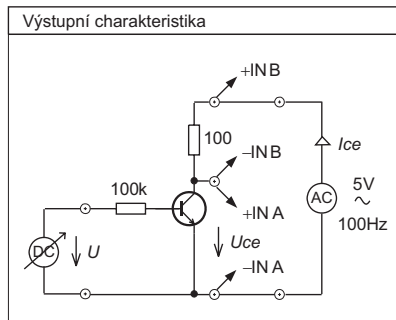
$$f_r = \text{konst}$$

Měření

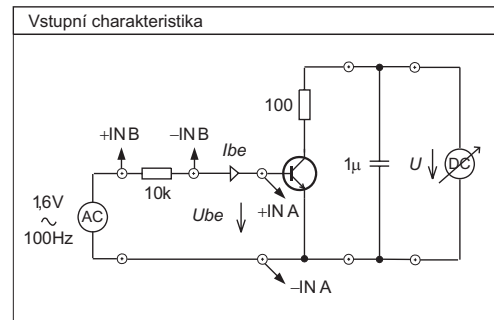


Tranzistor - výstupní a vstupní charakteristika

Schema

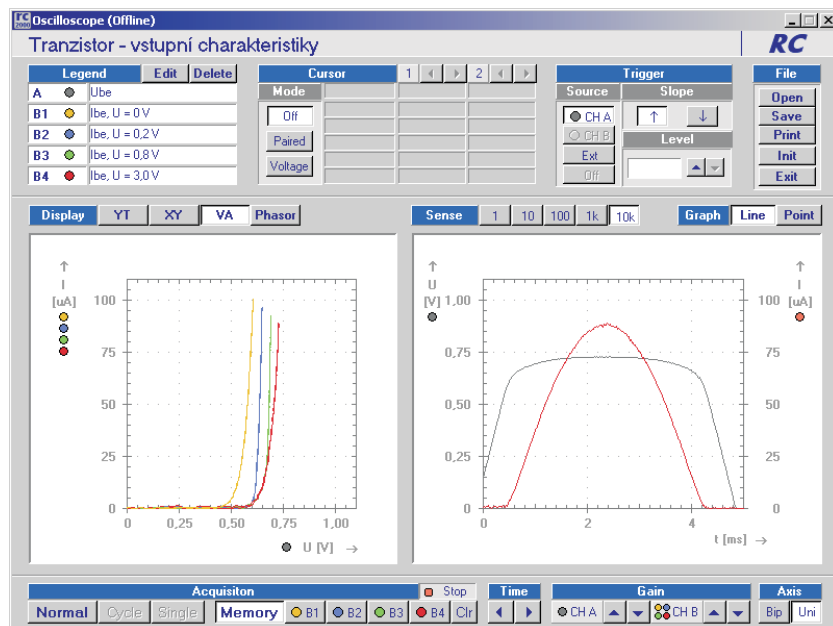
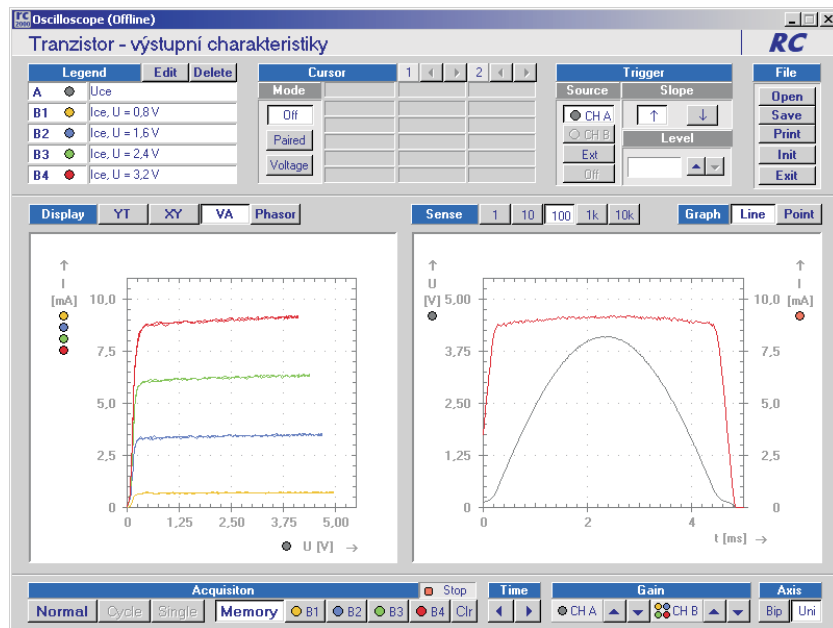


$I_{ce} = f(U_{ce})$ $I_{be} = \text{konst.}$



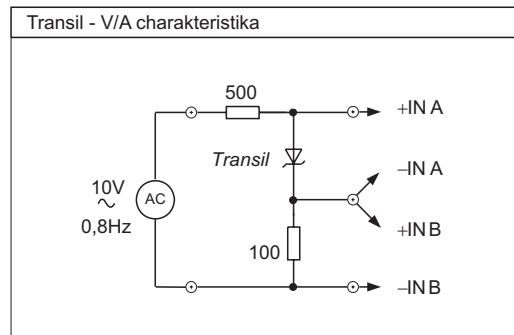
$I_{be} = f(U_{be})$ $U_{ce} = \text{konst.}$

Měření

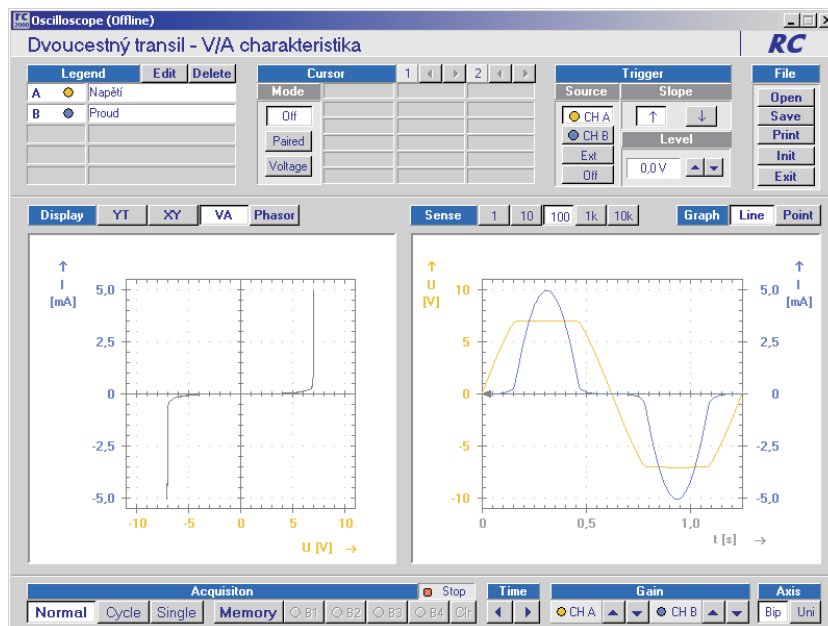
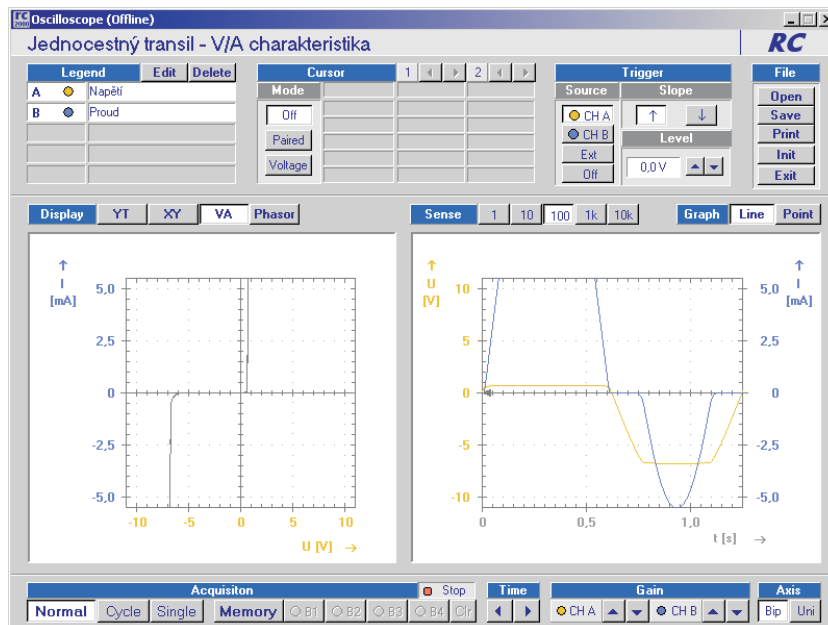


Transil - V/A charakteristika

Schema

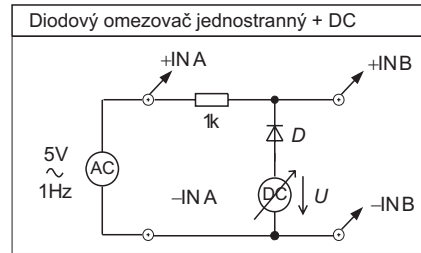
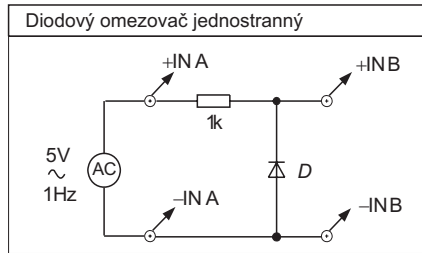


Měření

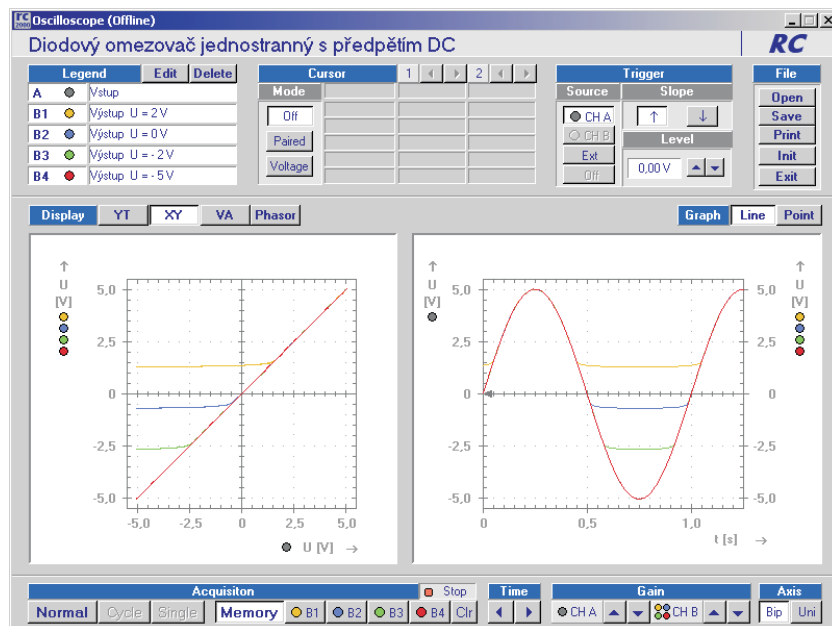
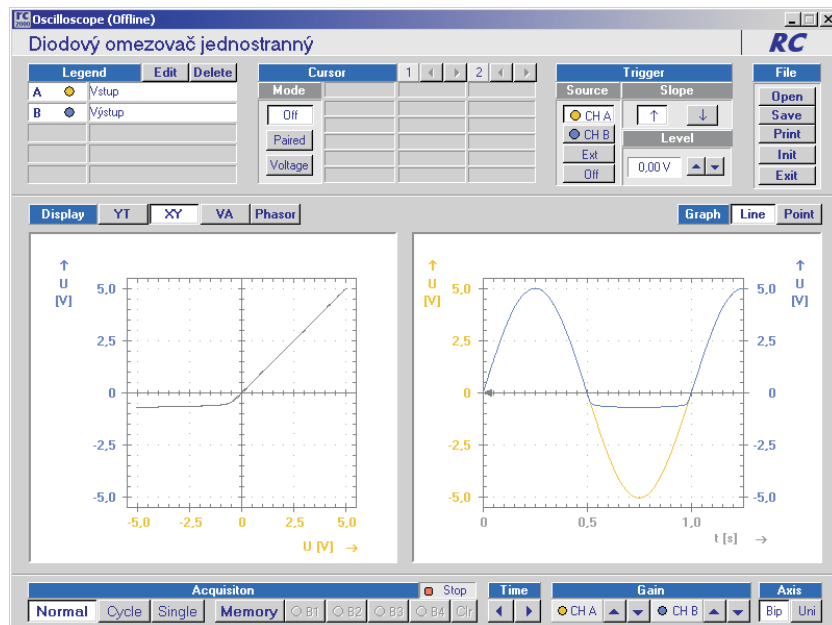


Diodový omezovač

Schema

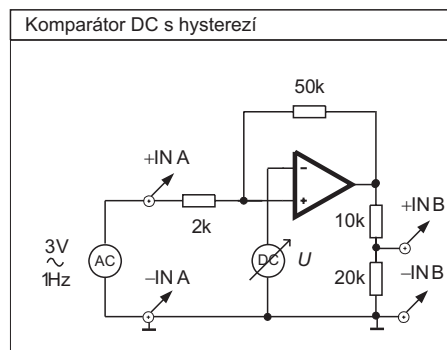
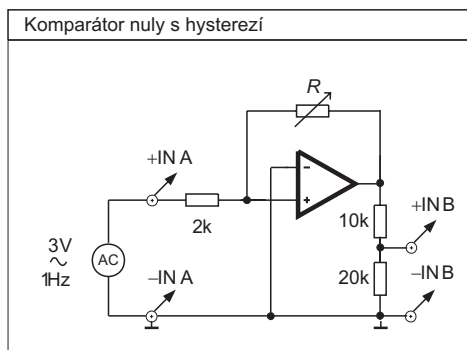


Měření

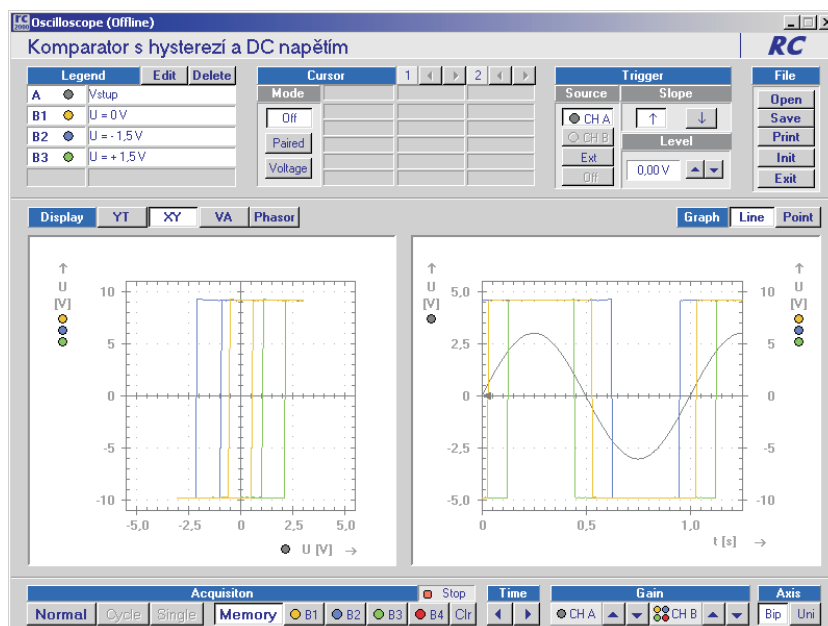
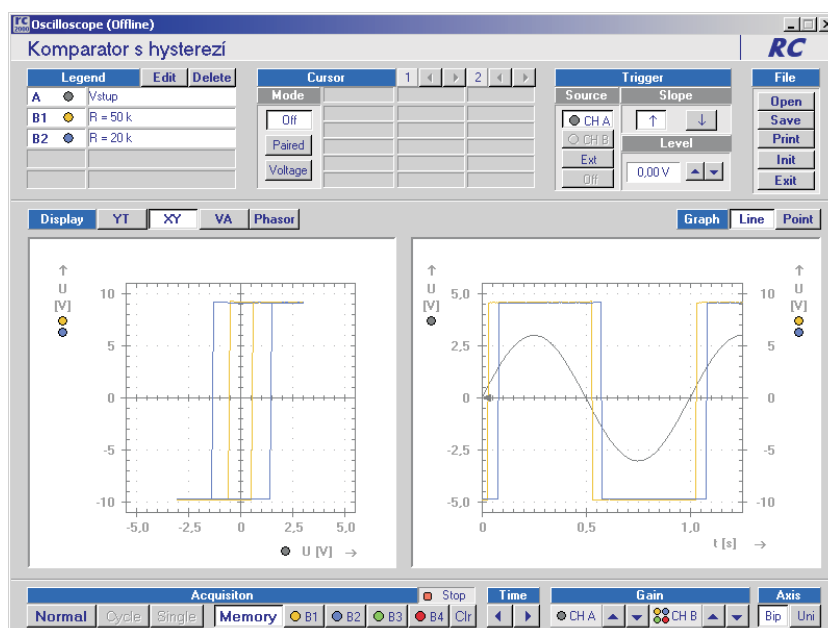


Komparátor s hysterezí

Schema

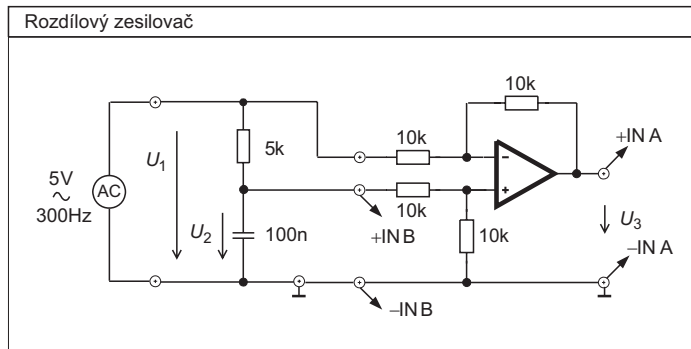


Měření



Rozdílový zesilovač

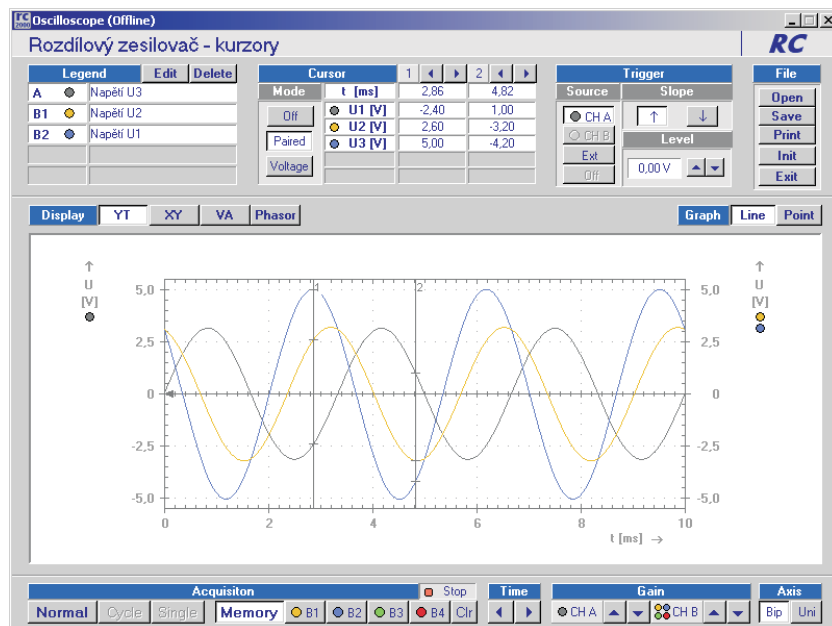
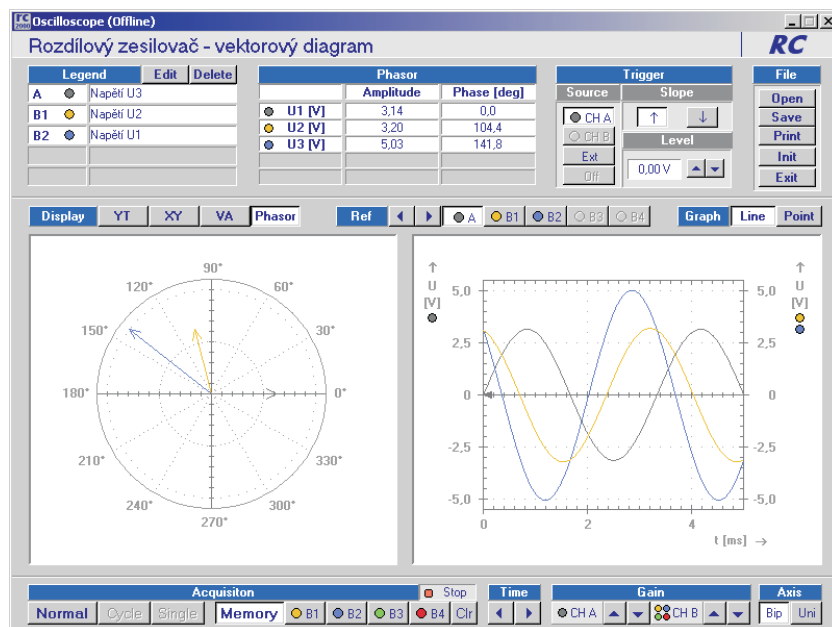
Schema



$$U_3 = -(U_1 - U_2)$$

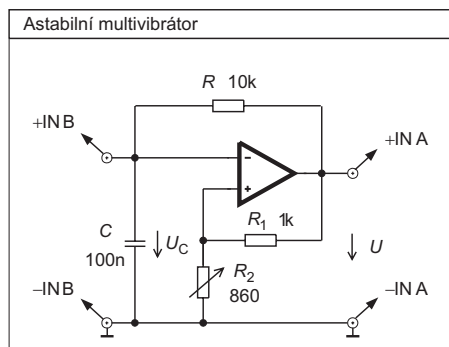
$$U_2 = U_3 + U_1$$

Měření



Astabilní multivibrátor

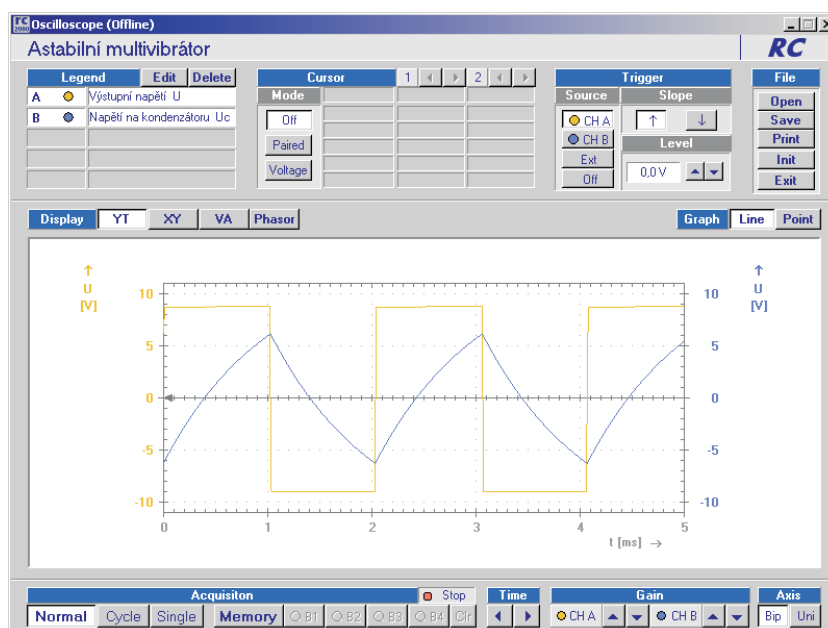
Schema



$$R_2 = 0,86R_1$$

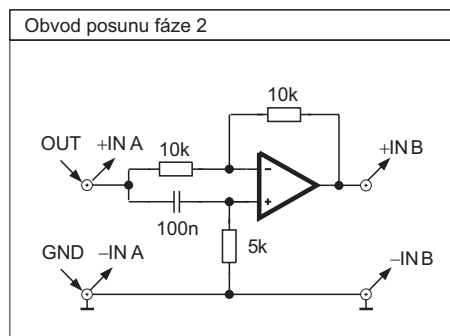
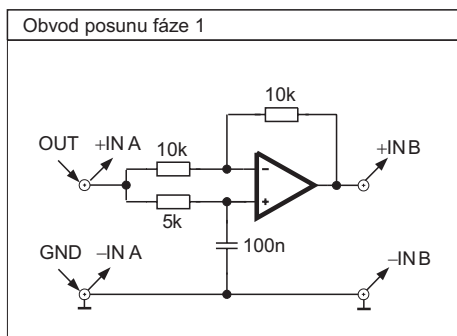
$$f = \frac{1}{2RC}$$

Měření

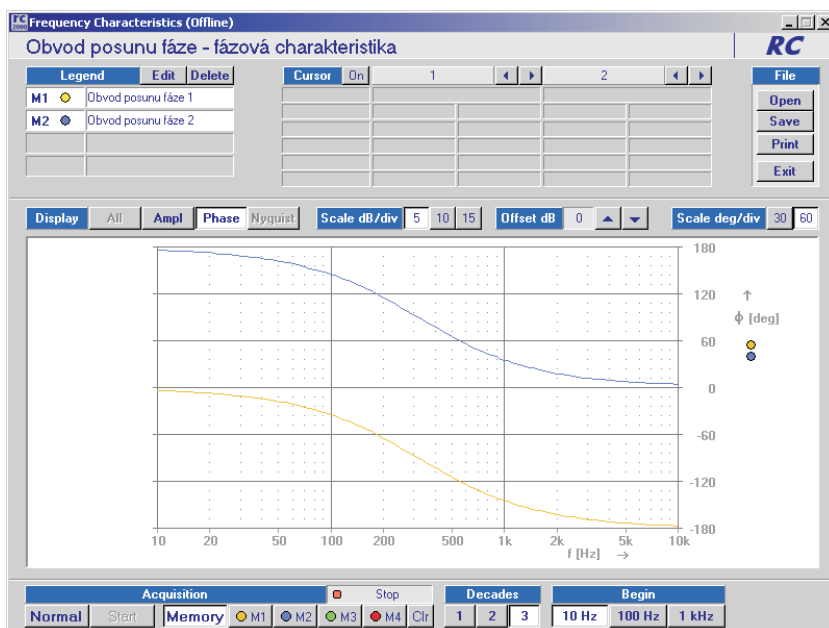
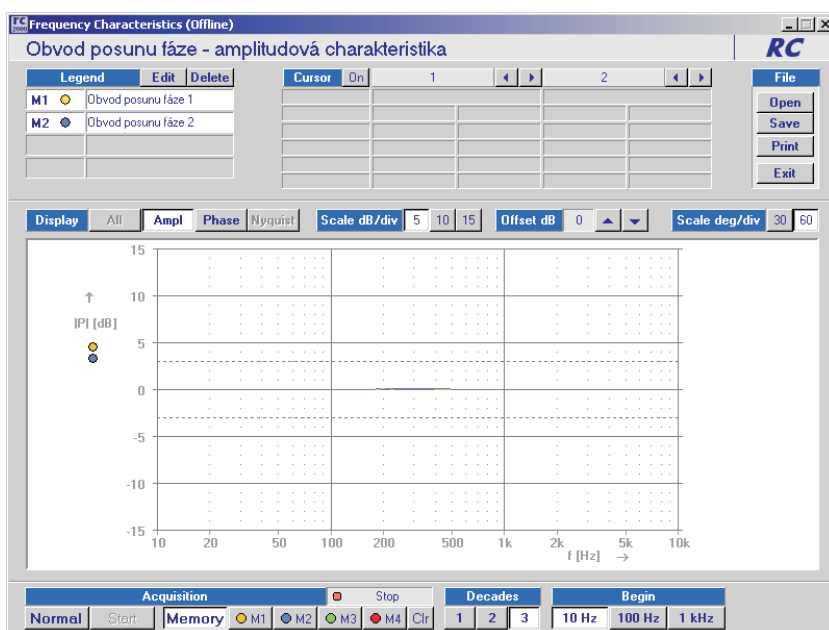


Obvod posunu fáze

Schema

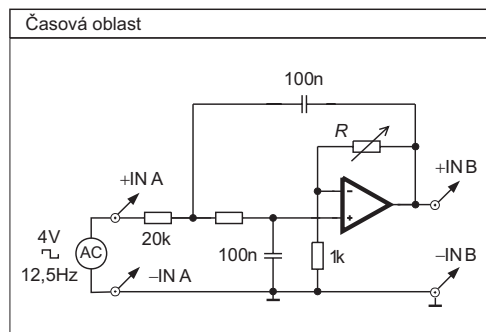
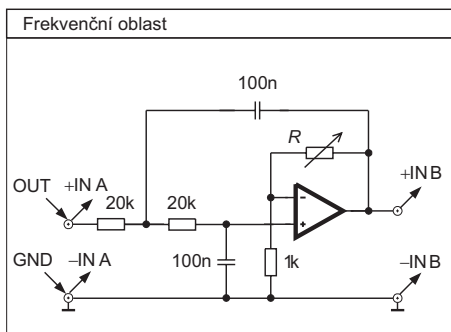


Měření



Aktivní dolní propust 2.řádu

Schema



Měření

